

EVIO Labs Medford (pka Kenevir Research)
 540 East Vilas Road, Suite F, Central Point, OR 97502
 541-668-7444 / OLCC 010-1001626980D / www.EVIOLabs.com

D-8 Caramel 001
Seventh Hill Releaf LLC
 For Info Only



Confident Cannabis ID: 2010KR0117.5406
Sample ID: M201665-01
Matrix: Ingestible
METRC Batch #:
Sampling Method/SOP: Client
Date Sampled: NA
Date Accepted: 10/15/20
Harvest/Process Lot ID:

Batch ID:
Batch Size (g):
Unit for Sale:
Harvest/Production Date:

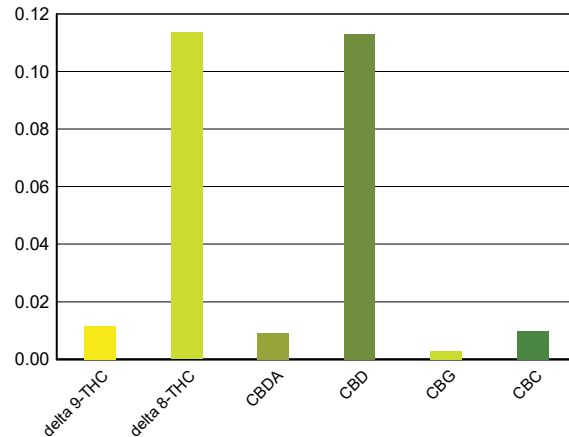
Cannabinoid Analysis

FOR INFORMATIONAL USE ONLY - NOT FOR REGULATORY PURPOSES

Date/Time Extracted: 10/16/20 11:45
 Date/Time Analyzed: 10/16/20 23:00

Analysis Method/SOP: SOP.T.40.020

Cannabinoids	LOQ(%)	mg/g	% weight	Cannabinoid Profile	
Total THC ((THCA*0.877)+Δ9THC)		0.11	0.011		
Total CBD ((CBDA*0.877)+CBD)		1.21	0.121		
THCA	0.002	< LOQ	< LOQ		
delta 9-THC	0.002	0.11	0.011		
delta 8-THC	0.002	1.14	0.114		
THCV	0.002	< LOQ	< LOQ		
CBGA	0.002	< LOQ	< LOQ		
CBDA	0.002	0.09	0.009		
CBD	0.002	1.13	0.113		
CBDV	0.002	< LOQ	< LOQ		
CBN	0.002	< LOQ	< LOQ		
CBG	0.002	0.03	0.003		
CBC	0.002	0.10	0.010		
THCV-A	0.002	< LOQ	< LOQ		
CBDV-A	0.002	< LOQ	< LOQ		
CBCA	0.002	< LOQ	< LOQ		
Sum of tested Cannabinoids	0.002	2.60	0.260		



"Total THC" and "Total CBD" are calculated values and are an Oregon reporting requirement (OAR 333-064-0100). For Cannabinoid analysis, only delta 9-THC, THCA, CBD, CBDA are ORELAP accredited analytes. Cannabinoid values reported for plant matter are dry weight corrected; Oregon Water Activity action level is 0.65Aw and Oregon Moisture Content action level is 15%. Samples above limit will be highlighted RED; FD = Field Duplicate; LOQ = Limit of Quantitation.

Stephanie Moon
 Laboratory Director - 10/20/2020

EVIO Labs Medford (pka Kenevir Research)
 540 East Vilas Road, Suite F, Central Point, OR 97502
 541-668-7444 / OLCC 010-1001626980D / www.EVIOLabs.com

Quality Control

Batch: M20J093 - SOP.T.30.050 Prep for Cannabinoids

Blank(M20J093-BLK1)			Extracted: 10/16/20 11:45		Analyzed: 10/16/20 22:27		
Analyte	Result	LOQ	Recovery Limits	Analyte	Result	LOQ	Recovery Limits
THCA	< LOQ	0.002 (%)	< LOQ	delta 9-THC	< LOQ	0.002 (%)	< LOQ
delta 8-THC	< LOQ	0.002 (%)	< LOQ	THCV-A	< LOQ	0.002 (%)	< LOQ
THCV	< LOQ	0.002 (%)	< LOQ	CBDA	< LOQ	0.002 (%)	< LOQ
CBD	< LOQ	0.002 (%)	< LOQ	CBDV-A	< LOQ	0.002 (%)	< LOQ
CBDV	< LOQ	0.002 (%)	< LOQ	CBG	< LOQ	0.002 (%)	< LOQ
CBGA	< LOQ	0.002 (%)	< LOQ	CBN	< LOQ	0.002 (%)	< LOQ
CBCA	< LOQ	0.002 (%)	< LOQ	CBC	< LOQ	0.002 (%)	< LOQ
Sum of tested Cannabinoid:	< LOQ	0.002 (%)	< LOQ				

LCS(M20J093-BS1)			Extracted: 10/16/20 11:45		Analyzed: 10/16/20 22:44		
Analyte	% Recovery	LOQ	Recovery Limits	Analyte	% Recovery	LOQ	Recovery Limits
THCA	94.4	(%)	70-130	delta 9-THC	96.4	(%)	70-130
THCV	96.7	(%)	70-130	CBDA	94.6	(%)	70-130
CBD	95.3	(%)	70-130	CBG	95.2	(%)	70-130
CBGA	94.0	(%)	70-130	CBN	105	(%)	70-130
CBCA	97.0	(%)	70-130	CBC	95.7	(%)	70-130



Stephanie Moon
 Laboratory Director - 10/20/2020